

# QUIZ TIME



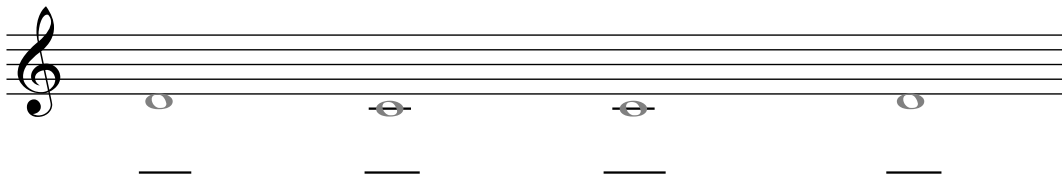
1. Do you remember how many beats are in each of these notes:

○ =                      ♩ =                      ♪ =

MARKS

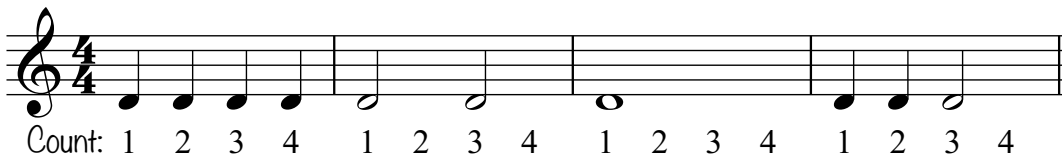
/6

2. Trace over these notes and underneath each one write its letter name:



/4

3. Clap this rhythm:



/10

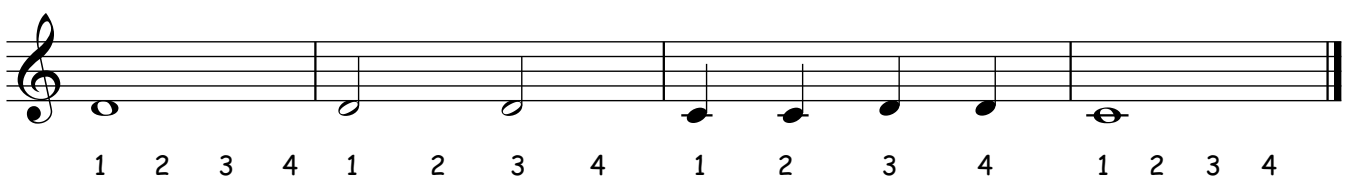
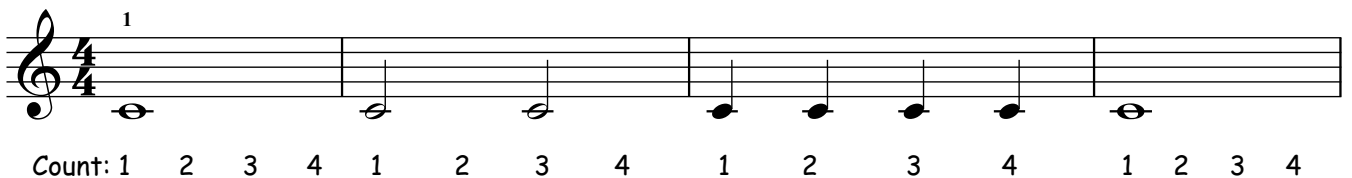
TOTAL MARKS

/20

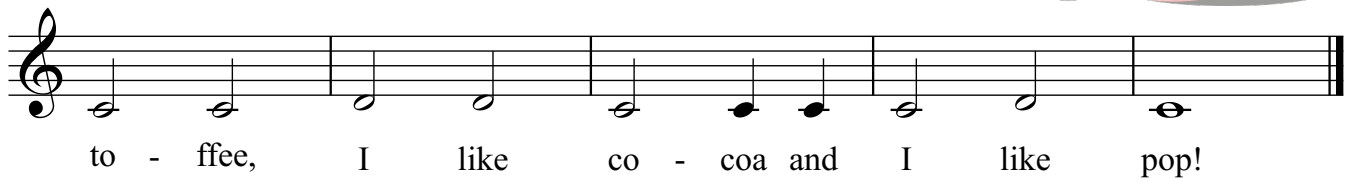
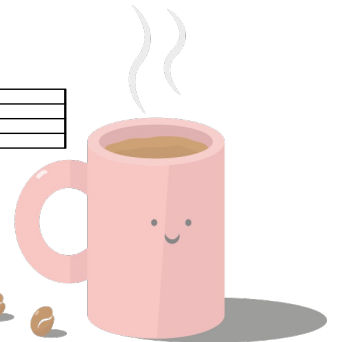
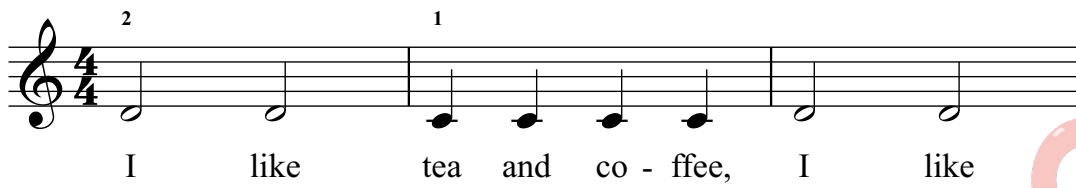
The  $\frac{4}{4}$  time signature means there are 4 crotchet beats in each bar



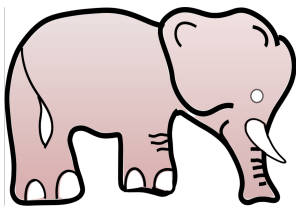
## TRACK THE BEAT



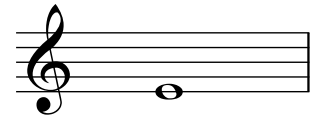
# TEA AND COFFEE



## Stage 2: Introducing right hand E



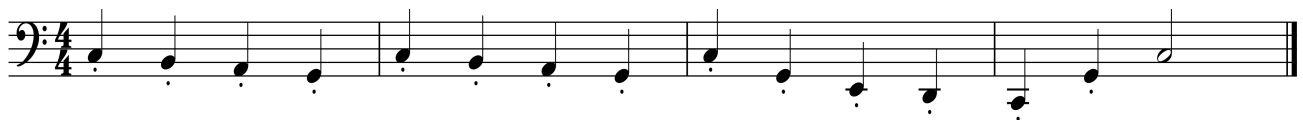
The note E is on the bottom line



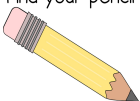
# THE ELEPHANT



Accompaniment for *The Elephant*



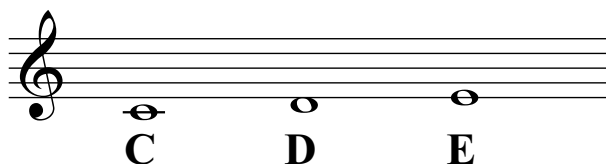
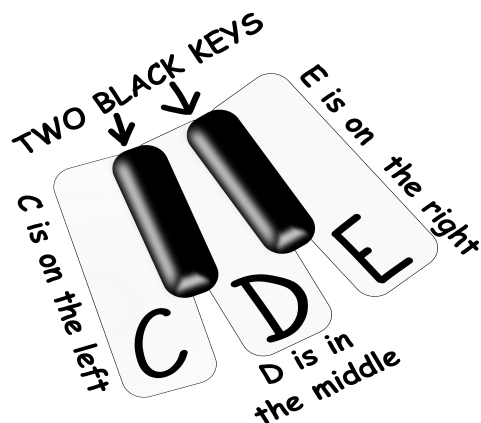
Find your pencil



Look at this tune, then draw a circle around every E that you can see.  
(The first one has been done for you).



## Stage 3: Tunes using right hand notes C, D and E



### STEP IT UP



## QUIZ TIME

1) Draw these notes - the first three have been done for you:

MARKS



/6

2) Add bar lines to this tune:



/4

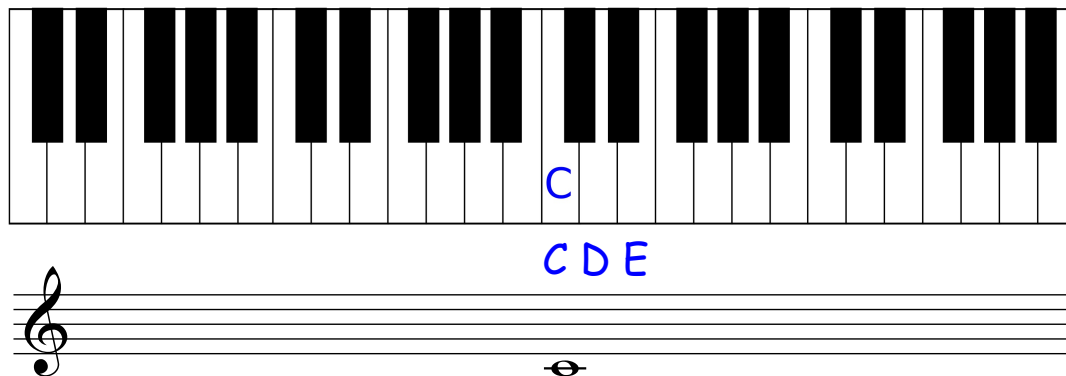
TOTAL MARKS

/10

# QUIZ TIME



1. Write the letter names for C, D and E on the keys then draw each of these right hand notes on the staff below. (The first one has been done for you.)



MARKS

/4

2. Write the name of these signs:



\_\_\_\_\_

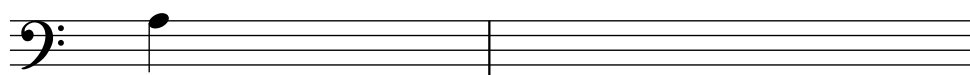


\_\_\_\_\_

/2

3. Draw these notes as crotchets.

(The first one has been done for you.)



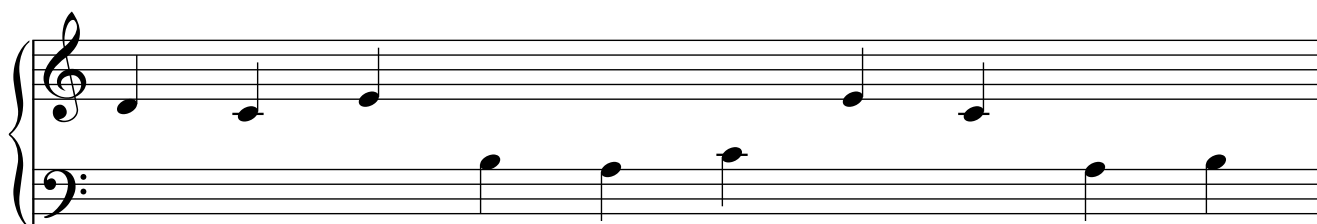
A C B A C B A

/4

TOTAL MARKS

/20

SAY THESE NOTE NAMES:





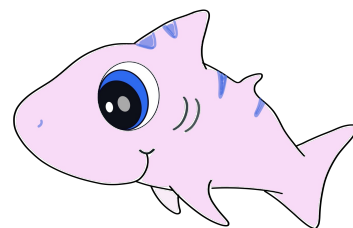
Baby Shark

Ba - by shark do do do do do do ba - by  
shark do do do do do do mu-mmy

shark do do do do do, ba - by shark do do do do

....etc

do do ba - by shark mu - mmy

[illegible]

do do do do do\_\_\_\_ do do let's go hunt!

\* If playing with accompaniment play one octave higher

## Accompaniment for *Baby Shark*

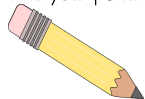
\* In Baby Shark, some of the notes are tied. Please look on page 27 for the note about ties.

[illegible]

Do you remember how long each type of note lasts?

Here is a reminder:

a quaver is  $\frac{1}{2}$  beat    a crotchet is 1 beat    a minim is 2 beats    a semibreve is 4 beats



Next to each note draw another note which is twice as long as the one already written.  
The first one has been done for you.

The first staff of music is in treble clef and contains five measures. The notes are: G4 (quarter), A4 (quarter), B4 (quarter), A4 (quarter), and G4 (quarter). The notes are all black, except for the B4 note which is blue.

## Stage 8: Introducing rests

A rest is a moment of silence in the music. Rests can be very short or they can be quite long.



↑	↑	↑	↑
a quaver rest	a crotchet rest	a minim rest	a semibreve rest
↓	↓	↓	↓
a quaver note	a crotchet note	a minim note	a semibreve note

Find your pencil



Next to each note draw a rest which is the same value.

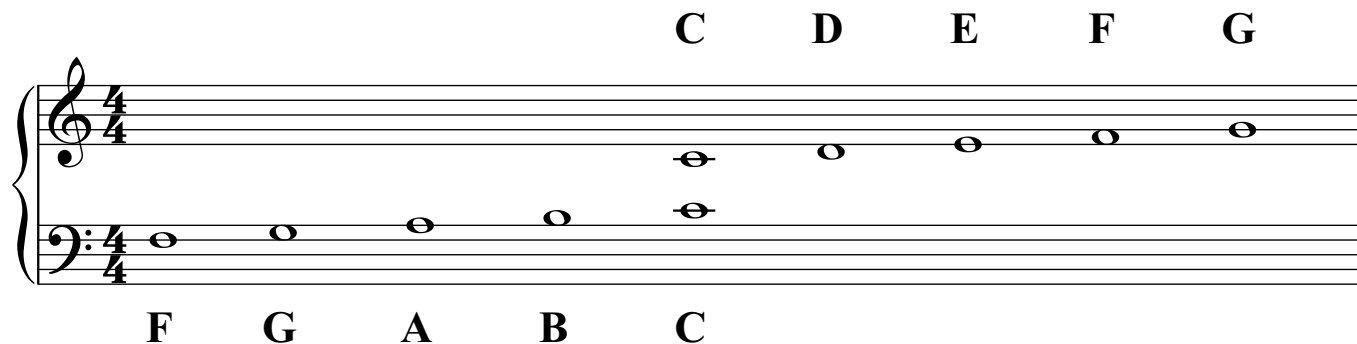
The first one has been done for you.



**MIND THE GAP**



Stage 10: These tunes use the notes  
F, G, A, B, C, D, E, F and G

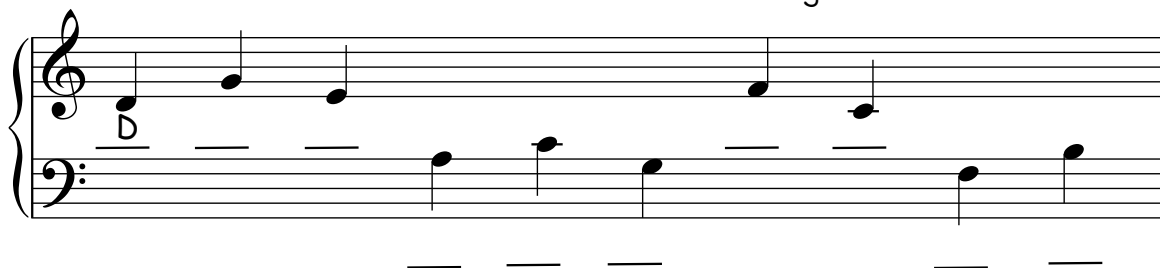


## RUNNING AROUND



## QUIZ TIME

1) Write in the note names (the first one has been done for you):



MARKS

/10

2) Draw these right hand notes (the first one has been done for you):



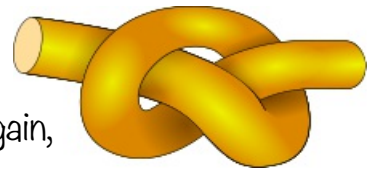
/10

TOTAL MARKS

/20

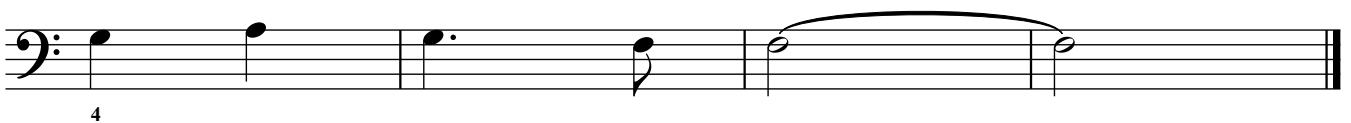
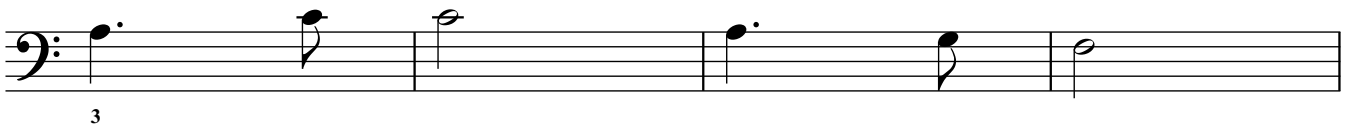
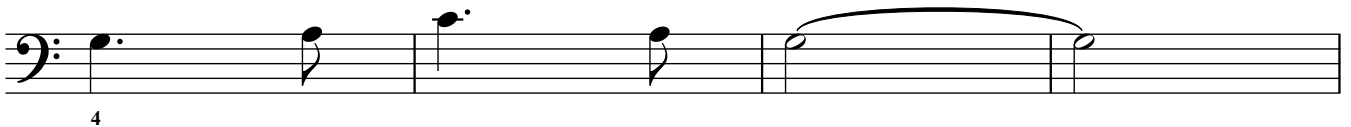
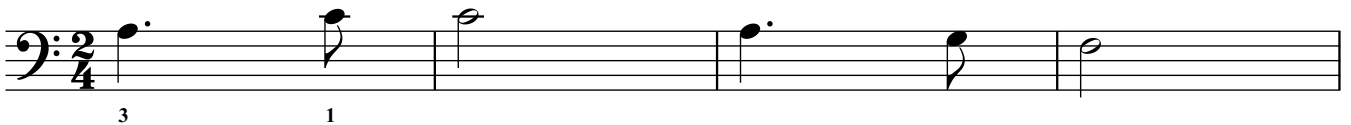
## Stage 12: The tie

A tie is a curved line joining one note to another one on the same line or space. It means that the second note is not played again, but just held on. So, this note lasts for 6 beats:

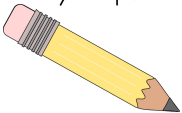


2 means 2 crotchet  
4 beats per bar

### The New World



Find your pencil



1) Write the name of each note.

2) Next to each note, draw another note which is one step higher and write the name of the note underneath. (The first one has been done for you).



F G

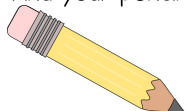


\* If playing *The Skye Boat Song* with accompaniment, play the melody one octave higher

### Accompaniment for *The Skye Boat Song*

### DRAW SOME MINIMS

Find your pencil



Draw these notes (the first one has been done for you):



Do you remember how many beats  
a minim lasts for?  
Put a circle round your answer!

1

3

2

4

### Challenge Number 3: Find these notes

Play these notes as quickly as you can:

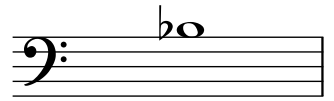
- with the right hand: E G D C F C D G E F
- with the left hand: B G C F G A F B C A

## Stage 14: Left hand B $\flat$

B flat is the black note which is just to the left of B.  
Can you find and play all of the B flats on your piano or keyboard?



This is a flat sign: **b**



If you see the note B with a flat sign written just to the left then you should play B flat instead of ordinary B. It also changes ALL of the following Bs in the bar into B flats.

BAA BAA BLACK SHEEP

5 1 2

'Baa baa black sheep have you a - ny wool?' 'Yes sir, yes sir three bags full.

PLAY Bb HERE TOO

One for the mas-ter, one for the dame, one for the li-ttle boy who lives down the lane'

1

PLAY Bb HERE TOO

PLAY Bb HERE TOO

## QUIZ TIME

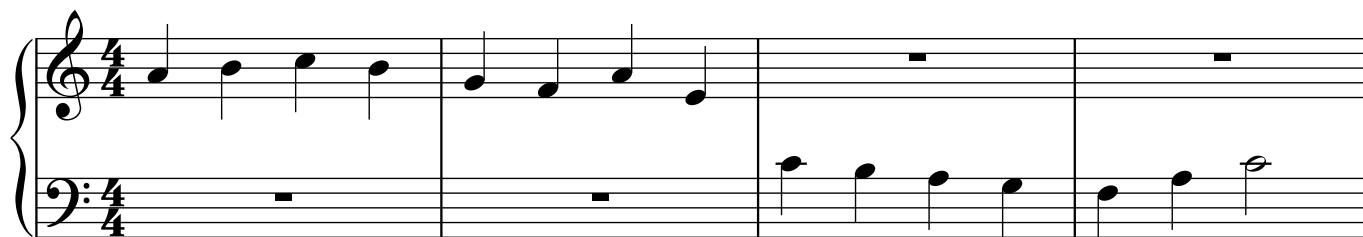
Add barlines to these tunes:

TOTAL MARKS

130

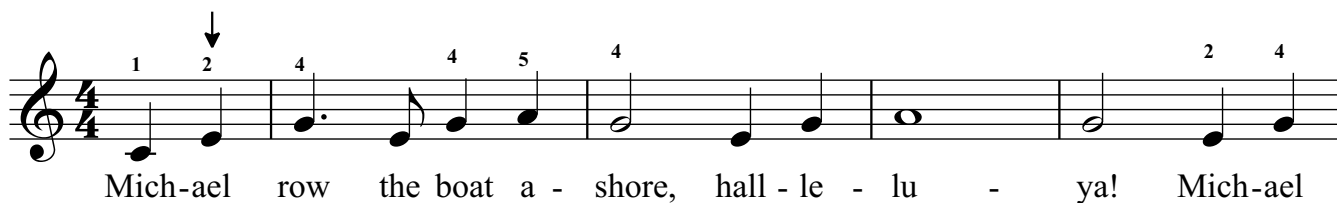


SAY THESE NOTE NAMES:

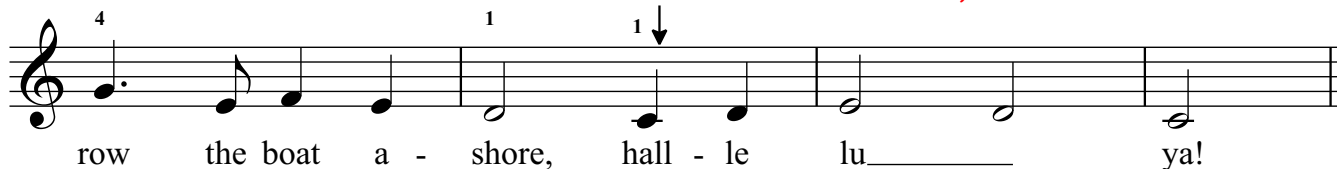


## MICHAEL ROW THE BOAT ASHORE

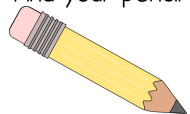
HERE YOU PLAY C WITH YOUR THUMB,  
THEN STRETCH FINGER 2 UP TO E



HERE YOU NEED TO MOVE YOUR THUMB FROM D TO C (YOU THEN  
CONTINUE IN THE NEW HAND POSITION)



Find your pencil



Answer these musical sums - the first one has been done for you.

1)  $\text{quarter} + \text{quarter} = \text{half}$

4)  $\text{quarter} + \text{quarter} =$

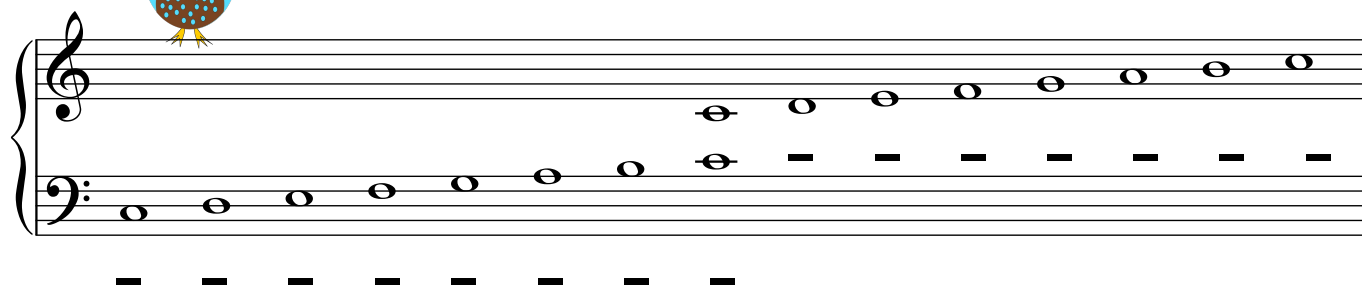
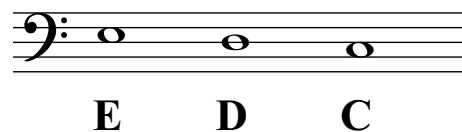
2)  $\text{quarter} + \text{quarter} + \text{quarter} =$

5)  $\text{quarter} + \text{quarter} =$

3)  $\text{quarter} + \text{half} =$

6)  $\text{quarter} + \text{quarter} =$

Underneath each of the notes below  
write it's letter name:



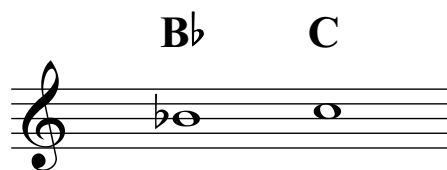
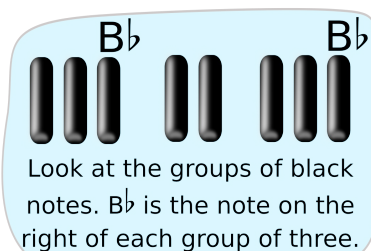
## LEFT HAND ONLY



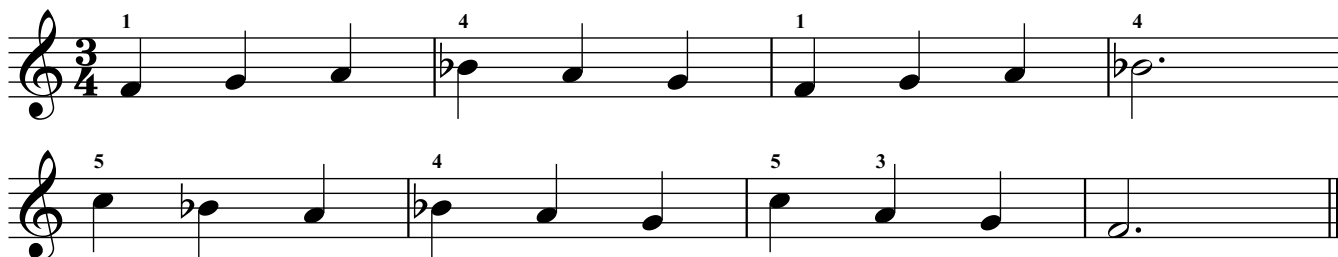
DO YOUR BEST!



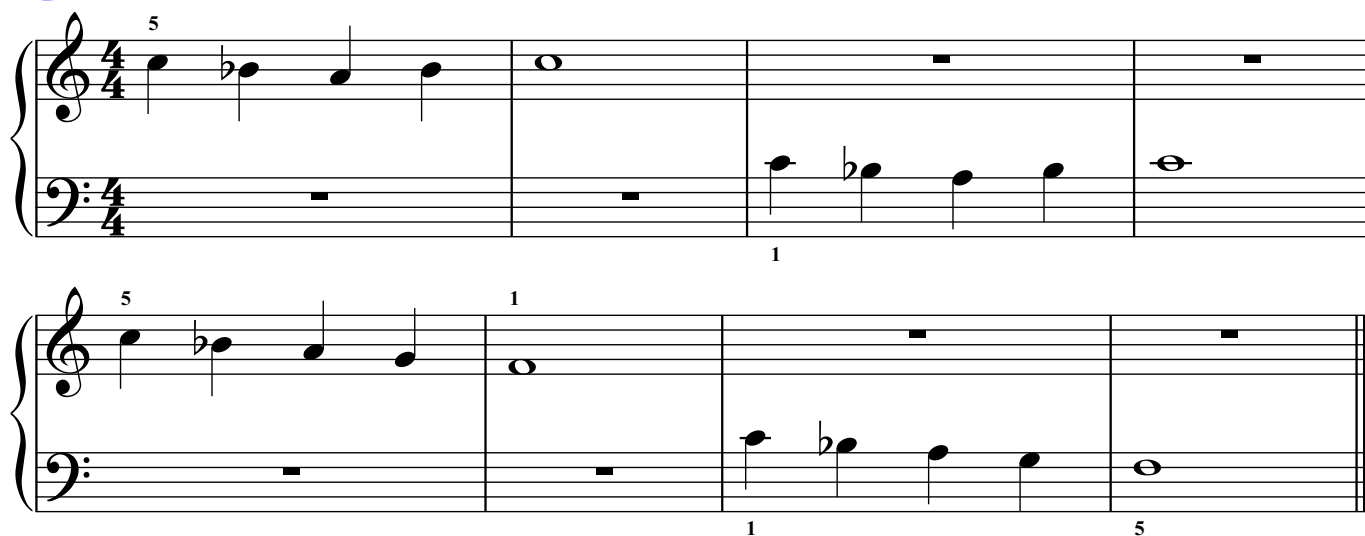
# Stage 17: Introducing right hand B $\flat$ and C



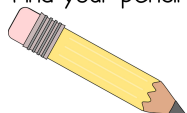
## Exercise 1



## Exercise 2



Find your pencil



## LET'S DRAW SOME FLATS

Draw a flat sign just to the left of each B in this tune.

